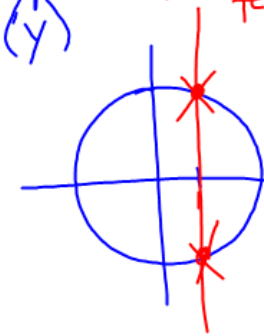


- Range \rightarrow set of y -values

- Function \rightarrow every input has only 1 output (vert. line test)

- Function Notation \rightarrow $f(x)$ in place of y

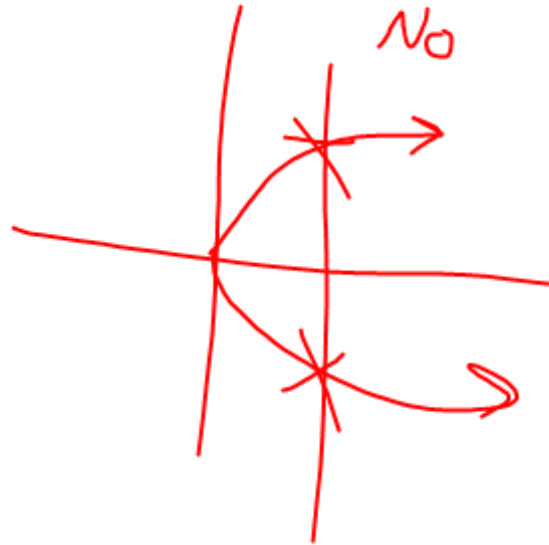
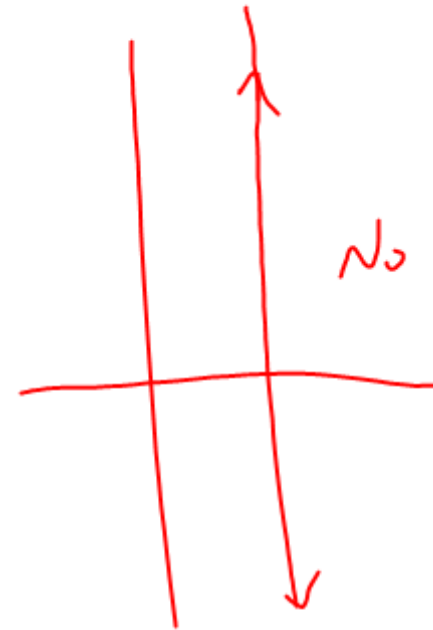
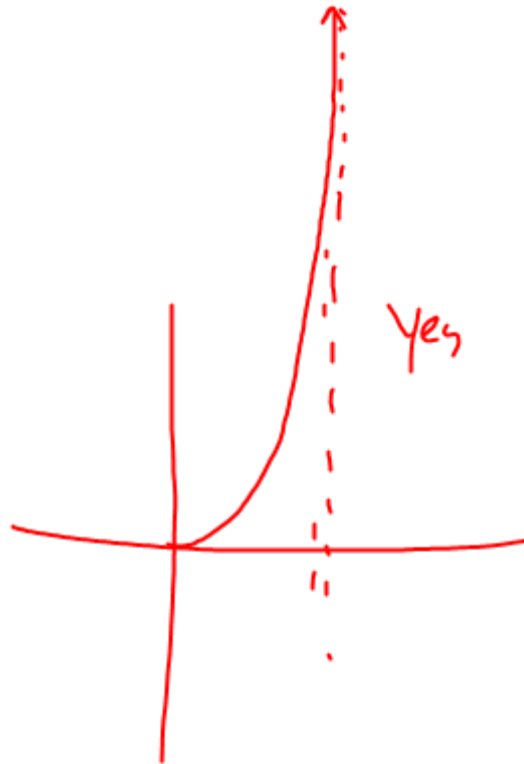
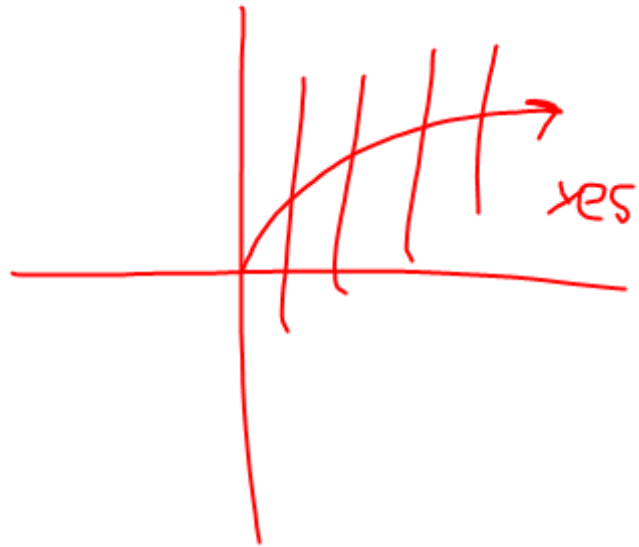


$$y = x + 2$$

$$f'(x) = x + 2$$

$$f(3) = (3) + 2$$

$$f(2) = (2) + 2$$



$$f(x) = x^2$$

$$f(4) = (4)^2$$

What x makes $f(x) = 25$

$$x = 5$$

$$(\underline{1}, 2) (\underline{1}, 3) (\underline{2}, 4) (\underline{2}, \underline{6})$$

Not
function

Sect. 2.1 #16-21, 22, 30, 36-39, 46-48

* Read the section